

# SmartEdge 800 Router Unpacking Instructions

220-0280-R12A

---

## INSTALLATION

## **Copyright**

© Ericsson AB 2010–2011. All rights reserved. No part of this document may be reproduced in any form without the written permission of the copyright owner.

## **Disclaimer**

The contents of this document are subject to revision without notice due to continued progress in methodology, design and manufacturing. Ericsson shall have no liability for any error or damage of any kind resulting from the use of this document.

## **Trademark List**

**SmartEdge** is a registered trademark of Telefonaktiebolaget LM Ericsson.



# 1      Unpacking the Chassis and Components

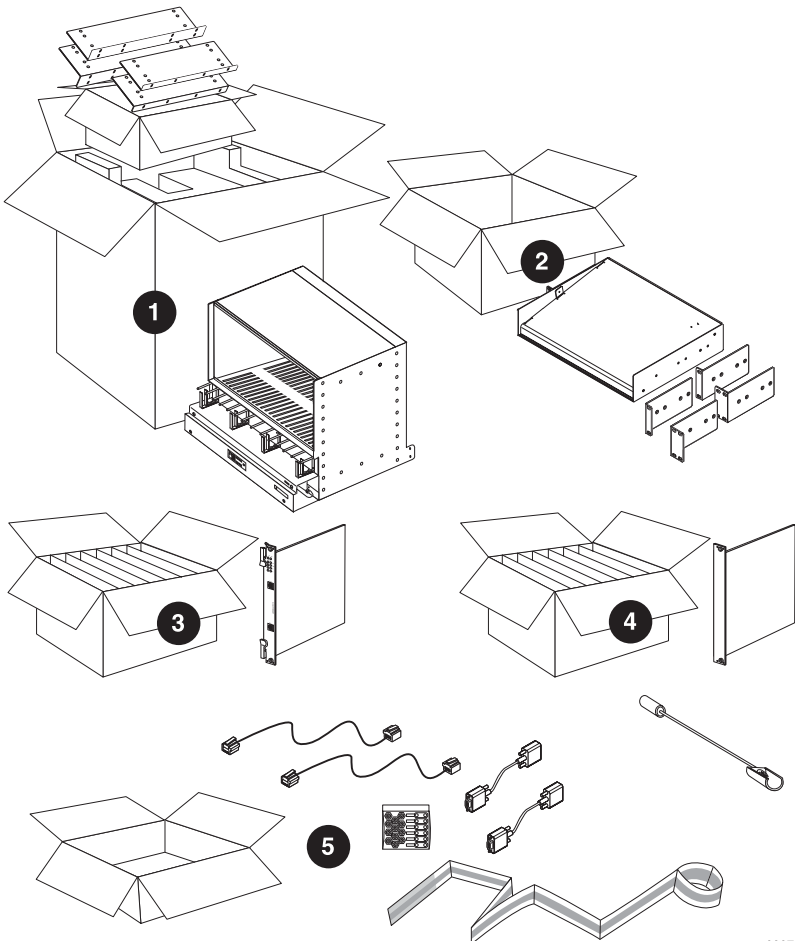


Figure 1    SmartEdge® 800 Packaging

Table 1    SmartEdge Components

1	Chassis and mounting hardware
2	Air ramp and mounting hardware
3 and 4	Controller, traffic, and blank cards
5	Optional accessories

## 1.1      Unpack Components

Use a heavy-duty cart to move the system components to the installation site.



As you unpack each carton, check the items in the carton against those listed on the packing slip to ensure complete and correct order fulfillment.

Unpack the chassis:

1. Open the carton and remove the box of mounting hardware in the top section and set it aside.
2. Remove the top foam cushion and the plastic bag that covers the chassis.
3. From the front on the chassis, grasp the underside of the chassis and partially lift its front edge from the bottom foam cushion; slide the chassis forward, until the lower front edge rests on the cushion and the chassis is at a slight angle.

---

---

### **Warning!**

Risk of personal injury. Do not lift the chassis without the aid of another trained person. Because of its size and weight (over 55 lb [25 kg]), the chassis can be awkward for one person to lift. Always follow the procedures for your installation site for safely lifting heavy objects.

---

---

---

---

### **Caution!**

Risk of equipment damage. Always grasp the chassis by its underside. Do not lift the chassis by its front and rear sides. No handhold can bear the strain induced by the chassis weight. The chassis can fall, or a component can warp or break.

---

---

4. Grasp the underside of the chassis from both sides and lift it onto the heavy-duty cart.
5. Examine the chassis for damage. If you see damage, contact your technical support representative.
6. Save the packing materials, in case you need to repack the chassis for relocation.

## **1.2 Unpack Air Ramp**

The optional air ramp carton contains:

- Air ramp



- Two pairs of mounting brackets, for both 19- and 23-inch racks
- Four 10-32 x 0.25-inch screws

Unpack the air ramp carton:

1. Open the carton and remove all enclosed packing materials.
2. Remove the top foam cushion.
3. Remove the plastic bag that covers the air ramp.
4. Examine the air ramp for damage. If you see damage, contact your technical support representative.
5. Save the packing materials, in case you need to repack the air ramp for relocation.

## 1.3 Unpack Cards

1. Open each carton and remove the individual card boxes.
2. Open each box, remove all enclosed packing materials, and check the contents against the items listed on the packing slip. Save the packing materials in case you need to repack the cards for relocation.
3. As you remove each card from its box, examine it for damage. If you see damage, consult your technical support representative.
4. Leave each card in its antistatic bag until you are ready to install the card.

## 1.4 Unpack Accessories

Unpack the accessories carton, which contains:

- Craft console cables (DB-9 connectors), to connect the Craft port on a controller card to a PC, terminal, or terminal server for local access
- Shielded Ethernet straight cables (RJ-45 connectors), to connect the Ethernet port on a controller card to a LAN
- Miscellaneous power connection parts—Compression lugs and locking washer nuts
- Other cables as ordered



## 1.5 What to Do Next

---

---

### Caution!

Risk of equipment damage. Do not remove the DC jumper plugs unless the instructions in the system hardware guide indicate to do so.

---

---

You are now ready to install the system:

1. Install and power on the system. Instructions are included in the system hardware guide.
2. Use the `show version` command in any mode to determine the release of the operating system that is installed on your system.

For product safety warnings and information about how to install this product, see Reference [1].



## Reference List

- [1] *SmartEdge 800 Router Hardware Guide*, 28/153 30-CRA 119 1170/1